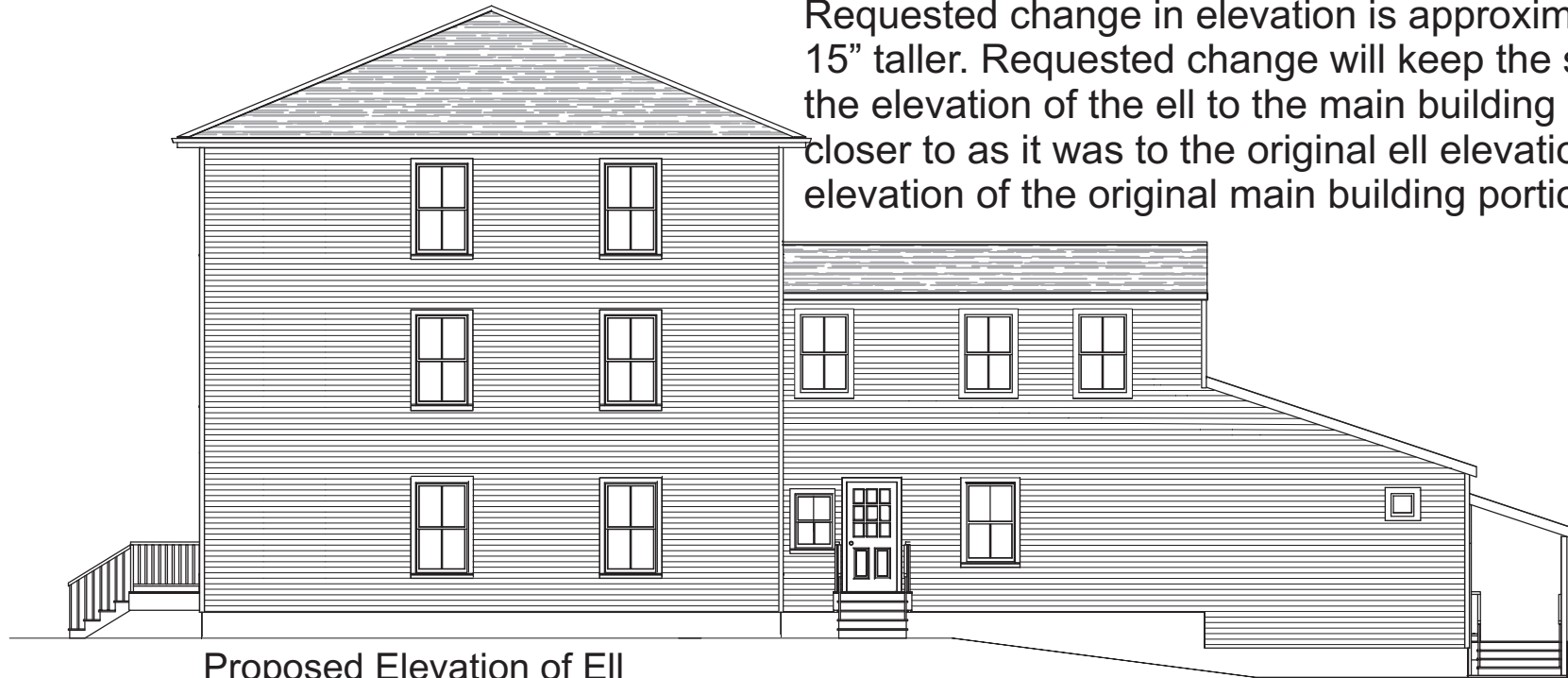


Both elevation depictions are depicted with the already approved change in elevation to the main portion of the building.



Original Elevation of Ell

Requested change in elevation is approximately 15" taller. Requested change will keep the scale of the elevation of the ell to the main building portion closer to as it was to the original ell elevation to the elevation of the original main building portion.



Proposed Elevation of Ell



