

NOTES:

- LEFT-TURN LANE CONCEPT FOR ROUTE 25 WAS DEVELOPED IN CONJUNCTION WITH THE CORE X DEVELOPMENT.
- ROUTE 25 IS A PRIORITY I ROADWAY WITH A POSTED SPEED LIMIT OF 40 MPH.
- RIGHT-OF-WAY INFORMATION AND TOPOGRAPHIC SURVEY SHOWN IS FROM AN EXISTING CONDITIONS SURVEY COMPLETED FOR CORE X BY SEBAGO TECHNICS.

CALCULATIONS:

STORAGE LENGTH: 50 FEET RECOMMENDED
LESS THAN 60 MOVEMENTS, WITH LESS THAN 10% TRUCKS

BAY TAPER: 10:1 FOR 40 MPH PER MAINE DOT DESIGN GUIDANCE
 $10 \times 12' = 120' \text{ BAY TAPER}$

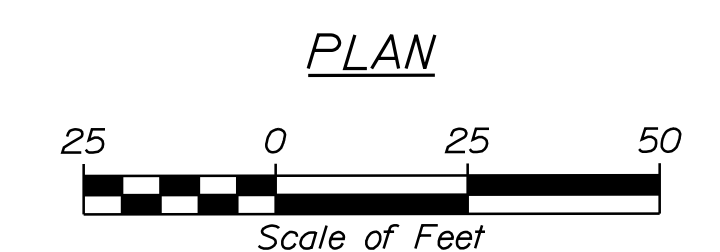
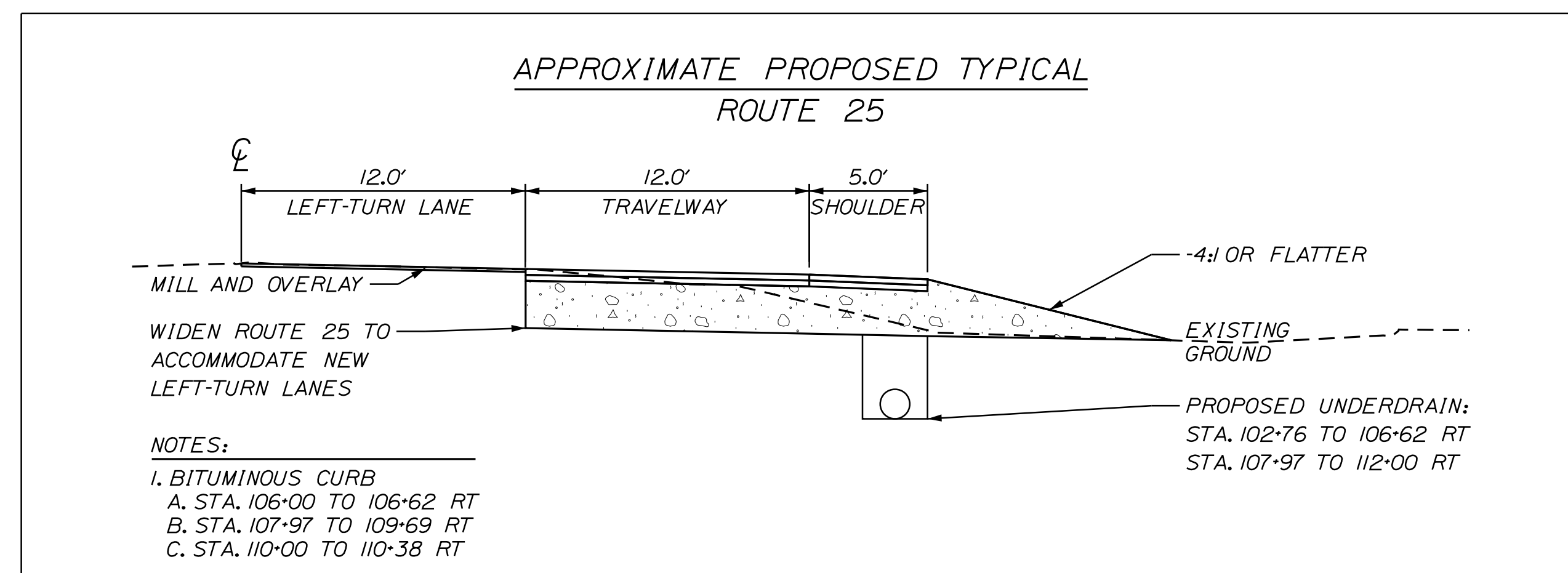
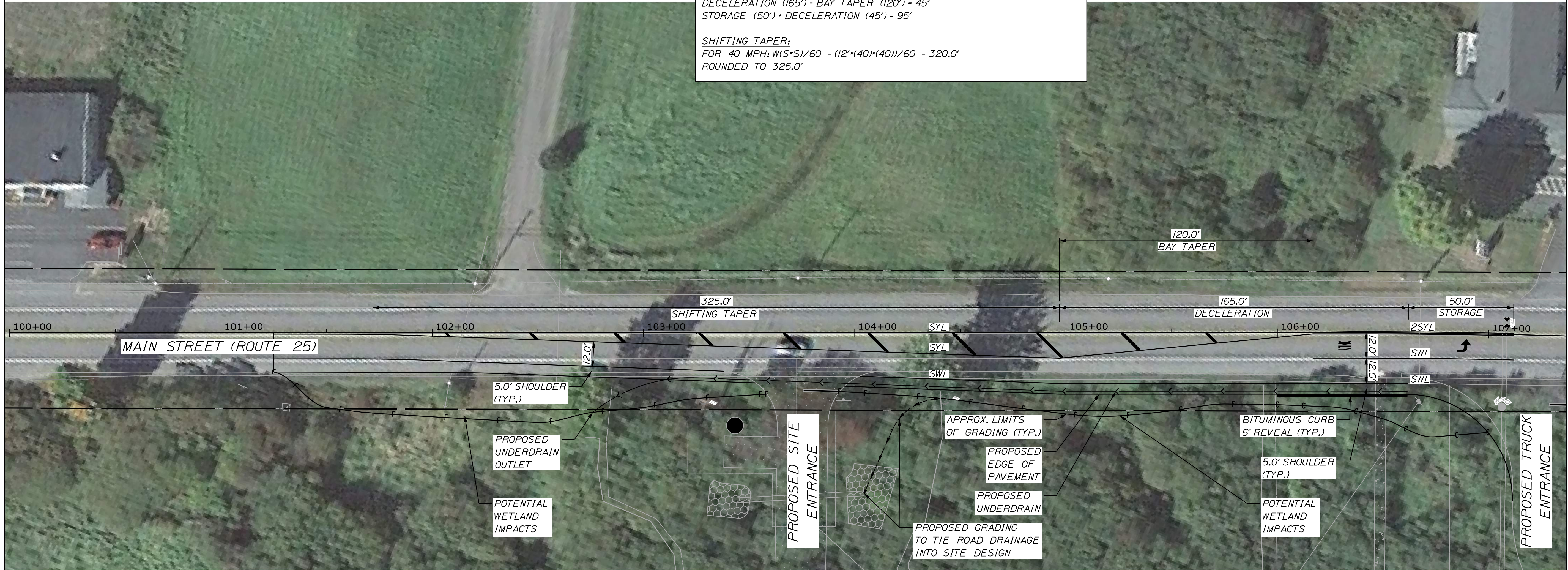
DECELERATION: 165.0' FOR 40 MPH PER MAINE DOT DESIGN GUIDANCE

LEFT-TURN LANE LENGTH:
DECELERATION (165') - BAY TAPER (120') = 45'
STORAGE (50') + DECELERATION (45') = 95'

SHIFTING TAPER:
FOR 40 MPH: $W(S^2)/60 = (12' \times (40)^2) / 60 = 320.0'$
ROUNDED TO 325.0'

PAVEMENT MARKING LEGEND

- 2SYL TWO SOLID YELLOW LINES (4")
- SYL SOLID YELLOW LINES (4")
- SWL SOLID WHITE LINES (4")



PLS OR PE

PROGRESS PRINT

PLS OR PE

NOT FOR CONSTRUCTION

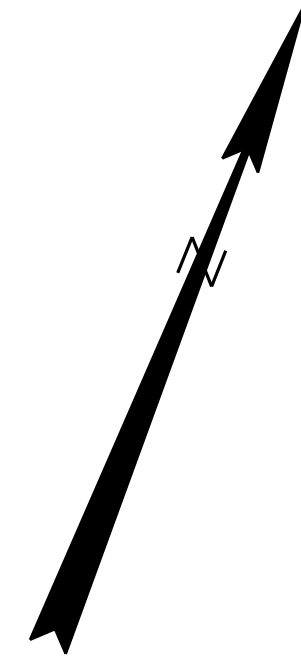
DESIGNED	CHECKED
ZTJ	NLC
1 ZTJ 11/22/23 CONCEPT PLAN	
REV: BY:	DATE: STATUS:
THIS PLAN SHALL NOT BE MODIFIED WITHOUT WRITTEN PERMISSION FROM SEBAGO TECHNICS, INC. ANY ALTERATIONS AUTHORIZED OR OTHERWISE, SHALL BE AT THE USER'S SOLE RISK AND WITHOUT LIABILITY TO SEBAGO TECHNICS, INC.	

SEBAGO
TECHNICS

WWW.SEBAGOTECHNICS.COM

75 John Roberts Rd.
Suite 4A
South Portland, ME 04106
Tel. 207-200-2100

TURN LANE CONCEPT
OF:
CORE X COLD STORAGE FACILITY
MAIN STREET
GORHAM, MAINE
FOR:
CORE X
90 CHARLTON ROAD
STURBRIDGE, MA



NOTES:

1. LEFT-TURN LANE CONCEPT FOR ROUTE 25 WAS DEVELOPED IN CONJUNCTION WITH THE CORE X DEVELOPMENT.
2. ROUTE 25 IS A PRIORITY I ROADWAY WITH A POSTED SPEED LIMIT OF 40 MPH.
3. RIGHT-OF-WAY INFORMATION AND TOPOGRAPHIC SURVEY SHOWN IS FROM AN EXISTING CONDITIONS SURVEY COMPLETED FOR CORE X BY SEBAGO TECHNICS.

CALCULATIONS:

STORAGE LENGTH: 80 FEET RECOMMENDED
LESS THAN 60 MOVEMENTS, WITH GREATER THAN 10% TRUCKS

BAY TAPER: 10:1 FOR 40 MPH PER MAINEDOT DESIGN GUIDANCE
 $10 \times 12' = 120'$ BAY TAPER

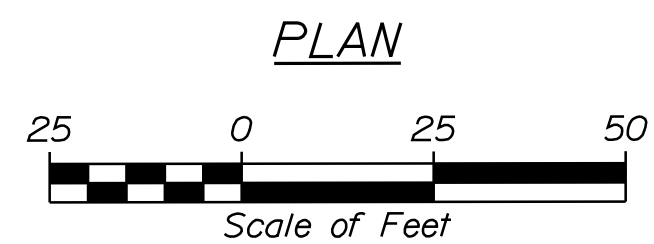
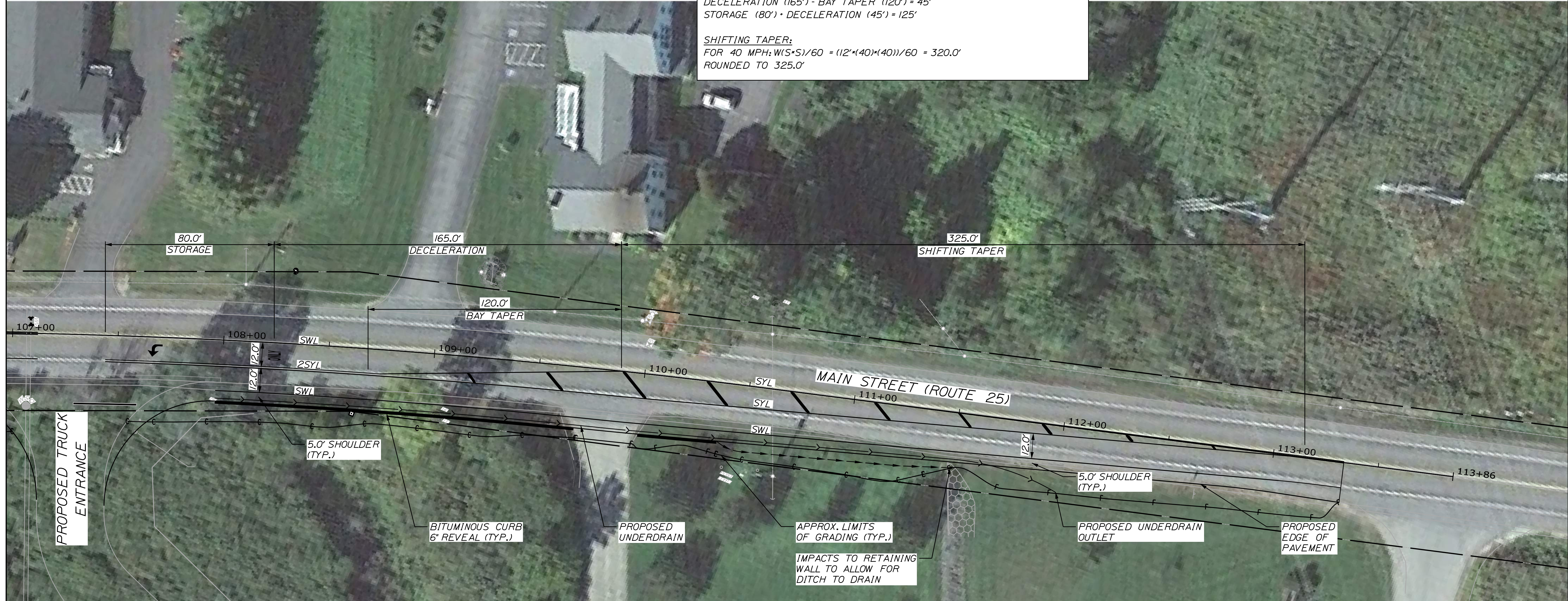
DECELERATION: 165.0' FOR 40 MPH PER MAINEDOT DESIGN GUIDANCE

LEFT-TURN LANE LENGTH:
DECELERATION (165') - BAY TAPER (120') = 45'
STORAGE (80') + DECELERATION (45') = 125'

SHIFTING TAPER:
FOR 40 MPH: $W(S^2)/60 = (12' \times (40)^2) / 60 = 320.0'$
ROUNDED TO 325.0'

PAVEMENT MARKING LEGEND

2SYL	TWO SOLID YELLOW LINES (4")
SYL	SOLID YELLOW LINES (4")
SWL	SOLID WHITE LINES (4")



PLS OR PE

PROGRESS PRINT

NOT FOR CONSTRUCTION

DESIGNED	CHECKED
ZTJ	NLC
1 - ZTJ 11/22/23 CONCEPT PLAN	
REV: BY:	DATE: STATUS:

THIS PLAN SHALL NOT BE MODIFIED WITHOUT WRITTEN PERMISSION FROM SEBAGO TECHNICS, INC. ANY ALTERATIONS AUTHORIZED OR OTHERWISE, SHALL BE AT THE USER'S SOLE RISK AND WITHOUT LIABILITY TO SEBAGO TECHNICS, INC.

SEBAGO
TECHNICS
WWW.SEAGOTECHNICS.COM
75 John Roberts Rd.
Suite 4A
South Portland, ME 04106
Tel. 207-200-2100

TURN LANE CONCEPT
OF:
CORE X COLD STORAGE FACILITY
MAIN STREET
GORHAM, MAINE
FOR:
CORE X
90 CHARLTON ROAD
STURBRIDGE, MA

PROJECT NO.	SCALE
220106-01	1" = 25'

...MSTA\Sheets\Concept Plan 2.dgn